

Attachment III. Pottery (additional materials).

R_6.

E1_92.

There has been found a slightly concave vessel lid made from dense moderately kneaded red fabric with inclusions of fine sand and fine inclusions of mica. The lid's inside and outside surface is coated with red engobe that grows dark in some places. In the upper part of the lid there is a slightly oblong loop-shaped handle made by application. The handle is oval in the cross section. The edges are straight, being sub-rectangular in the cross section. On the outside, the lid is decorated with an incised floral pattern of alternating oval and curled lines. The lid is 14 cm in diameter and 6.2 cm high (Fig. 1).



Fig. 1.

There has been found a high foot of a vase-type vessel (a high vessel with straight walls narrowing closer to the high foot) made from dense moderately kneaded grey fabric with a lot of inclusions of fine sand and mica particles. Its surface was coated with a layer of light-coloured clay of thin consistency. The bottom is concave and oval on the outside. The bottom's diameter is 11.5 cm, the survived part is 7 cm high. There are traces of some applications on the outside of the bottom (apparently, a decorative pattern resembling loop-shaped handles) (Fig.2).

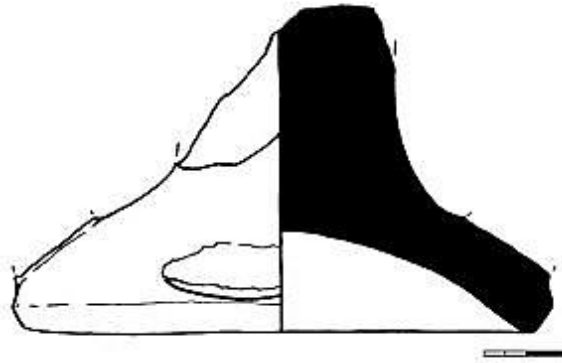


Fig. 2.

There has been found a small mug made from dense well-kneaded red fabric with negligible inclusions of fine sand and mica. The piece's surface is coated with reddish engobe from the outside. Its polish has partially survived. The rim is straight. The edges are oval and elongated in the cross section, with a slight bell mouth. The rim's diameter is 6.5 cm. The mug is narrowed at the top, the walls gradually turning into a slightly widened body at the bottom. A small loop-shaped handle, oval in the cross section, is also attached to the side of the body's widened part. The bottom is flat. Its diameter is 4.5 cm. On the outside, the bottom is decorated with an incised pattern (tamga) of a drawn circle, in which small intercrossing X-lines are incised. The mug is 9.6 cm high (Fig. 3).

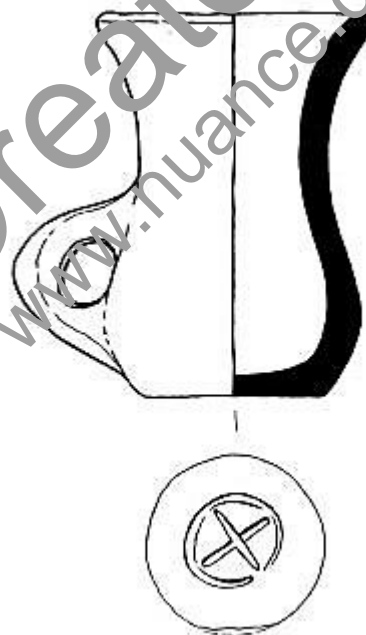


Fig. 3.

There has been found a small open-shaped lamp made from dense well-kneaded light-red fabric with negligible inclusions of fine sand and mica. The item's surface is partially coated with red engobe on the outside, and polishing is also visible. The engobe coating has hardly survived. The lamp's reservoir is oval, with a drain spout slightly folded forward, the chiragh is 7.7 cm wide, 8 cm long (including the spout) and 3.1 cm high. On the side opposite to the

spout, there are traces of a handle that had been attached to the lamp. There are traces of soot and smoke on the outside and on the inside of the wall's edges (Fig. 4).

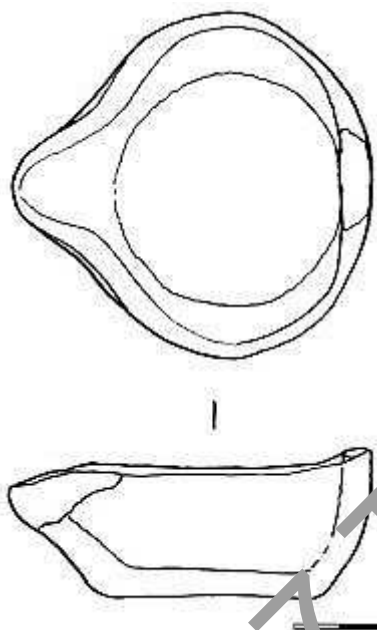


Fig. 4

There has been found a whole hand-made vessel resembling a small mug with a small loop-shaped handle attached to the rim's edge and slightly higher than the rim. The handle is oval in the cross section. The vessel is made from moderately kneaded dense grey fabric with inclusions of fine sand and mica has been found. The piece's surface is coated with reddish engobe in some places on the outside. The rim is narrowed back and is oval in the cross section. The cylindrical body narrows down to the flattened bottom. The rim's diameter is about 4.2 cm. In the upper part, on the side, there is a reach-through hole with a small spout folded forward. The hole is 0.7 cm in diameter. The body's diameter is 8.5 cm. The vessel is 8.3 cm high (Fig. 5).

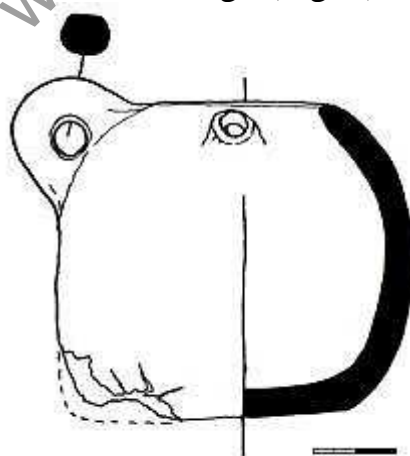


Fig. 5.

ЭЛ 94.

There has been found a small spindle whorl made from dense well-kneaded light-red fabric with negligible inclusions of fine sand and mica. The

item is made from a vessel wall whose outside is coated with light-coloured engobe. There is a reach-through hole in the middle of the item. The hole is 0.6 cm in diameter, with poorly treated, rough and uneven edges. The spindle whorl is 3.5 cm diameter and 0.8 cm thick (Fig. 1).

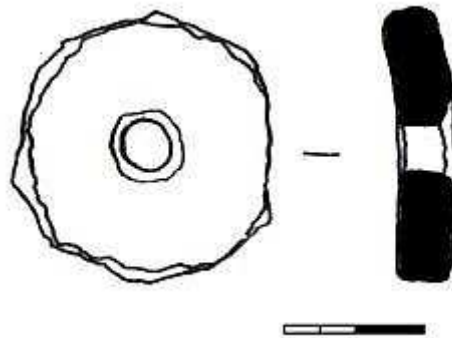


Fig. 1.

El_99.

During uncovering of Room 13.

There has been found a massive vessel foot made from dense moderately kneaded light-red fabric having grey interlayers in the cross section. The piece's surface is coated with partially survived light-red engobe on the outside. Traces of polishing are also visible. The vessel's upper part is missing. The foot is narrowed at the top and gradually widens down to the flat base (the bottom). A small loop-shaped bottom slightly pointed in the middle is attached to the side. The handle is oval in the cross section. The foot is decorated with an incised floral pattern of curved and straight lines and curls. The lower part is widened at the bottom, there is a protruding sideboard 2.2 cm wide that is also decorated with an incised pattern. In the center of the bottom, there is a truncated conical hollow of 3 cm in diameter. The survived part of the vessel is 16.5 cm (Fig. 1).

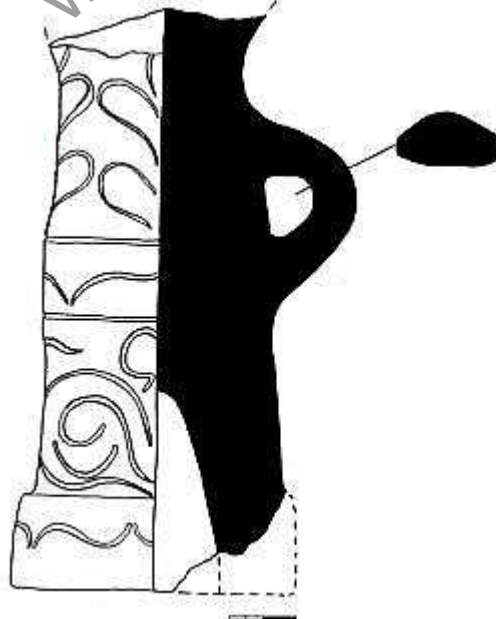


Fig. 1.

El_103.

A small whole hand-made pot made from moderately kneaded dense red fabric with inclusions of fine sand and mica has been found. The vessels' surface is coated with light-red engobe both from the inside and the outside, and its partial polishing is also visible on the outside, with traces of soot and smoke. The rim is straight, the edges are thickened, oval in the cross section and folded forward. A small loop-shaped handle slightly higher than the rim is attached to the rim's edge. The handle is oval in the cross-section. The rim's edge is decorated with an incised pattern of small inclined curved lines forming a horizontal band. The vessel's body is roundish and widened at the top, gradually narrowing down to the flat bottom. On the outside of the vessel's walls there is an incised pattern of alternating oval lines, aligned horizontally, and also of straight lines. The outer diameter of the rim is 6.5 cm, the diameter of the bottom is 6 cm. The vessel is 11.5 cm high (Fig.1).

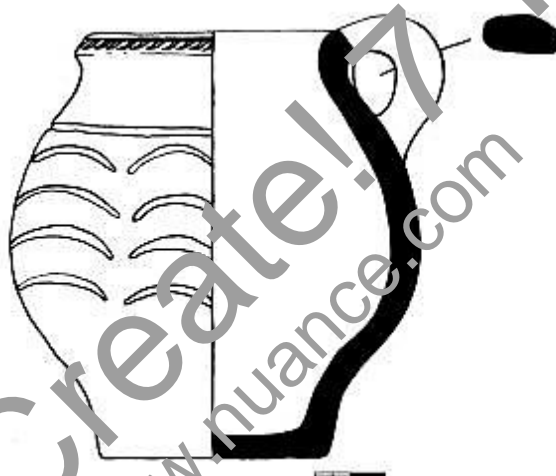


Fig. 1.

El_106.

There has been found a whole open-shaped lamp (chiragh) made from dense moderately kneaded grey fabric with inclusions of fine sand and mica. Its surface is coated with light engobe from the outside. A small high loop-shaped handle, oval in the cross section, is attached to the item's edge. On the side opposite to the handle and on the sides, there are drain chutes. The lamp is of a sub-rectangular shape. On the inside and, partially, on the outside there are traces of smoking in the form of a layer of soot. The vessel's walls are straight and are oval in the cross section. They gradually narrow down to the sloping flat bottom. The bottom's diameter is 7.5 cm. The lamp is 5 cm high (including the handle' height). The reservoir is 3.9 cm high, 13.4 cm long and 11 cm wide (Fig. 1).

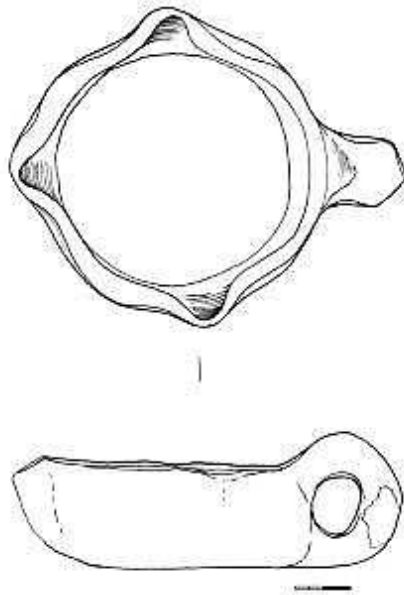


Fig. 1.

PDF Create! 7 Trial
www.nuance.com